



Hawes Side Larder Design Commission - EXTENDED

Background

Hawes Side is a neighbourhood in Blackpool, made up of private and social housing. Known for its glasshouse tomato growing between war-times, it was once a dominant feature of the North West.

We have been working in Hawes Side for four years, focusing on Bostonway - a social housing estate consisting of mainly sheltered housing. Through our long term artist residency scheme, we have supported residents during Covid restrictions and continue to collaborate with the community to experiment with creative interventions.

We have based ourselves in the 'Shoebox', an old storage space situated next to the Bostonway Community Centre (pictured above). The Shoebox has been used in various ways during our programme of artist residencies, one of who developed a free library during Covid for residents to swap books and other household objects. The library is situated in the covered area at the front of the Shoebox. The local residents donate and use the library regularly, using the front space as a 'swop shop'.

During consultations and cost of living workshops in Blackpool, we have witnessed the growth of food insecurity within our communities. Already some of the most deprived areas in the country, the cost of living crisis has only heightened existing inequalities.

Building on this knowledge and local conversation, we are looking to introduce community larders in two of our neighbourhoods, Mereside and Hawes Side. The UK produces around 9.5 million tonnes of food waste per year - so our aims are to highlight food waste, not

replicate food bank models. We believe in looking at different circular economies to challenge the current cost of living situation on a long term basis. The larders will promote benefits of eating seasonally and locally, how to eat, cook, and grow as we look to build a programme of long term sustainability.

Partners

Our work has collaboration at its core and we work with partners across the town to ensure long term sustainability. We have partnered with the following organisations on this project who provide different knowledge and insight:

- **Bridge Farm Allotments:** Local Allotments will be sharing excess fruit and veg produce while our own community garden will be an opportunity to exchange growing skills and encourage healthy eating.
- **Blackpool Coastal Housing:** The social housing provider in Blackpool, including Hawes Side area, have provided part of the funding to develop the community garden and larder at Bostonway.
- **Borrow It Blackpool:** A new initiative set up by Volunteer Centre Blackpool, Wyre & Fylde. It is a response to both the lack of access to tools and equipment, and also an attempt to cut down the amount of waste and underused equipment in people's houses. The Borrow It Blackpool project lends out household items, DIY tools, gardening and leisure equipment to those who need to borrow them, free of charge.
- **UCLAN:** The University of Central Lancashire has developed a permeable concrete with sea shells from Fleetwood, which will be used for the pathways in the community garden.
- **Blackpool Council:** Providing vital support and funding for the project through the Public Health department.

Artist Brief

We would like to appoint an artist/designer/architect to develop an interior design for the multi-use space (the Shoebox) within Bostonway. This is a small room that needs to support a community larder, community garden activity, and a small residents' library. We would like this space to be designed in response to community members' input. The consultation needs to be in person to fully understand the personality of the area and will be supported by LeftCoast's Neighbourhood Producer. The design should inspire users of the larder by using the reuse and repurpose principles that we are championing within the project. We are excited to see innovative approaches to reusing materials to provide a clear scheme. We are particularly looking for artists/designers/architects who are interested in continuing their involvement in the building of the design during the second stage.

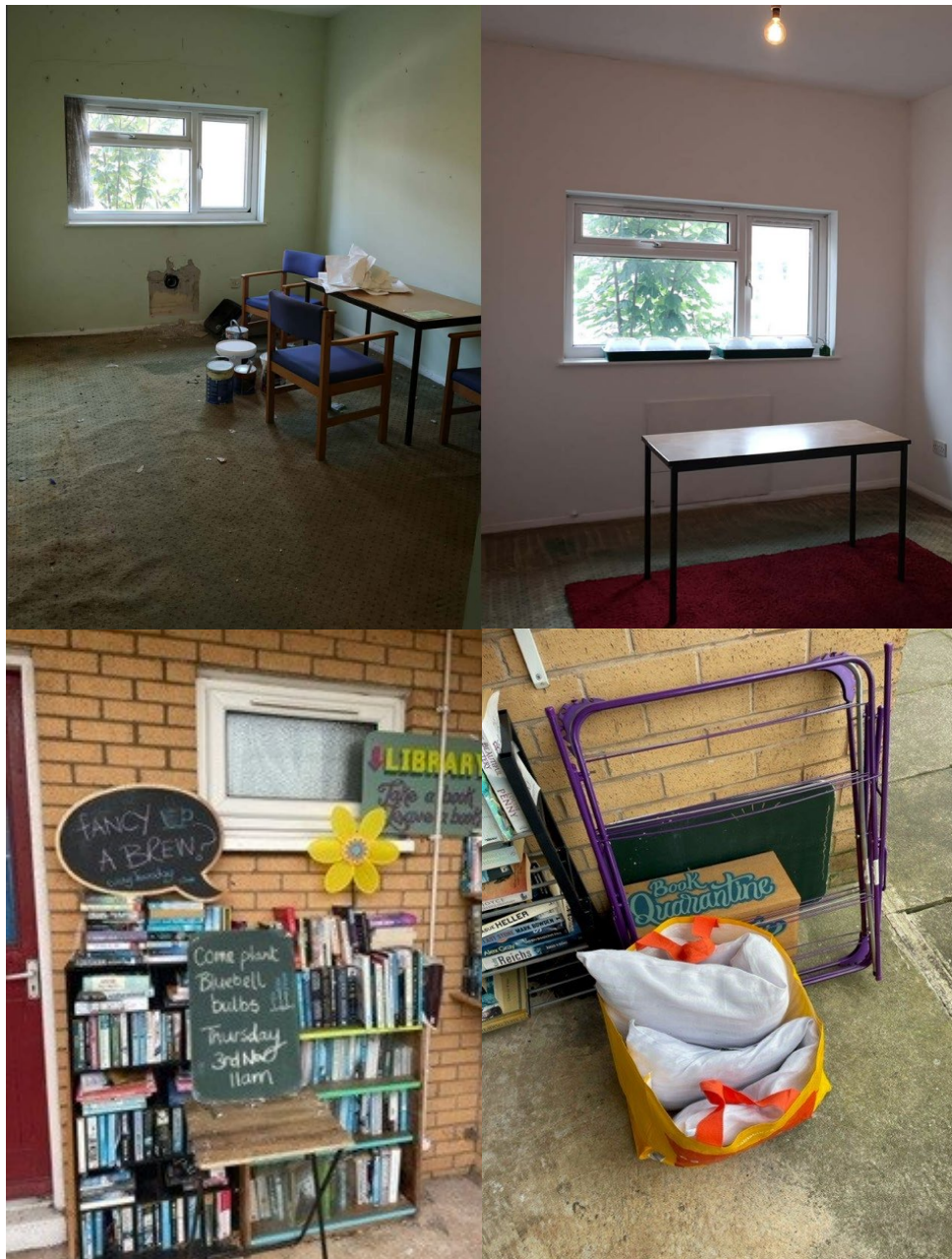
The existing space has a front door that opens onto the pavement and cul-de-sac, which houses sheltered residents. There is work being carried out to install another door to the back of the space that will open out directly in to the community garden. The community garden is also being redesigned as part of this process and we would like the successful artist to be in dialogue with the landscape architect to ensure the spaces work together

seamlessly. The larder should feel connected to the green space outside in both its materials and functionality.

As a multi-use space, the 'Shoebox' must function as:

- A space for growing, such as seedlings and produce before it is planted in the garden
- A small multi-use workshop, for both preparing produce for the larder – fermenting, pickling etc, and sowing seeds for the garden
- Small swop/shop library, which updates the existing swop shop inside and outside the front of the Shoebox
- A satellite venue for Borrow It Blackpool
- A place to be inspired to get involved and try out something new

The Shoebox space



Structure

The artist will need to spend at least half a day on site at Bostonway to engage with residents and fully explore the space prior to the design presentation.

Time Frame

April – Consultations and final design presentation

May – Build and create

How to apply

To apply please submit a proposal that outlines:

- Why you are interested in the commission
- A background to your practice and why you feel it is relevant
- Examples of your past work/projects that you think demonstrate how your practice fits this brief
- A breakdown of the budget into how many days you would spend on the project
- CV

Please send your proposal as one document, ideally a PDF, no more than 1,500 words with accompanying drawings/cads.

1. Brief released 16/2/2023
2. Deadline 12pm 20/3/2023 (EXTENDED)

Budget

Artist Fee:

£1,000 to include time spent on site and final plans and drawings presented.

Please email finished applications to our Neighbourhood Producer Catherine Peters catherine.peters@leftcoast.org.uk by 12pm 07/3/23

